

2

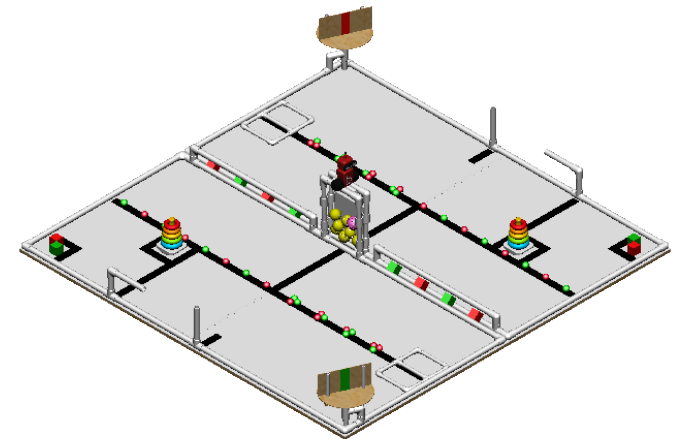
1

ITEM NO.	PART NUMBER	DESCRIPTION	QTY.
1	Particle Board 4' x 4' x 3/8" thick	or similar - can be cut from two 4' x 8' sheets	4
2	FRP 4' x 4'	White - cut from two 4' x 8' sheets	4
3	FRP Divider 48" long	White - cut from one 8' long part	2
4	Black duct tape	Duck brand - Midnight Madness - SKU# 7535303505	1
5	Window	8" x 10" Acrylic Pane or Masonite	2
6	12 inch - 3/4" PVC	3/4" ID SCH 40	4
7	6.5 inch - 3/4" PVC	3/4" ID SCH 40	2
8	3/4" PVC Coupler	3/4" ID SCH 40	8
9	PVC T Connector	1" ID SCH 40	16
10	PVC Elbow	1" ID SCH 40	20
11	PVC Coupler	1" ID SCH 40	8
12	45 inch PVC	1" ID SCH 40	2
13	42.25 inch PVC	1" ID SCH 40	2
14	40.625 inch PVC	1" ID SCH 40	2
15	40.375 inch PVC	1" ID SCH 40	2
16	33.875 inch PVC	1" ID SCH 40	4
17	24.000 inch PVC	1" ID SCH 40	4
18	9.000 inch PVC	1" ID SCH 40	8
19	5.000 inch PVC	1" ID SCH 40	2
20	3.25 inch PVC	1" ID SCH 40	2
21	1.75 inch PVC	1" ID SCH 40	16
22	8 inch - 1/2" PVC	0.5" ID SCH 40	6
23	6.5 inch - 1/2" PVC	0.5" ID SCH 40	6
24	5 inch - 1/2" PVC	0.5" ID SCH 40	8
25	3 inch - 1/2" PVC	0.5" ID SCH 40	4
26	1/2" PVC Elbow	0.5" ID SCH 40	12
27	1/2" PVC Coupler	0.5" ID SCH 40	2
28	1/2" PVC T Connector	0.5" ID SCH 40	6
29	Circular Wood Platform	12" Diameter x 1/4" Thick Wood	2
30	Wood Brace	10" 1x2 Wood (Actual 0.75"x1.5")	2
31	Wood Panel	12" x 5.5" x 1/4" Thick Wood Panel	2

All units are in inches or in feet.

Below a link to a purchasing list from Lowes can be found to assist in finding the correct pieces.

[Link to Purchase List](#)



KISS Institute for Practical Robotics

TITLE:

**2022 GAME
TABLE BUILD**

SIZE

A

DWG. NO.

BOM

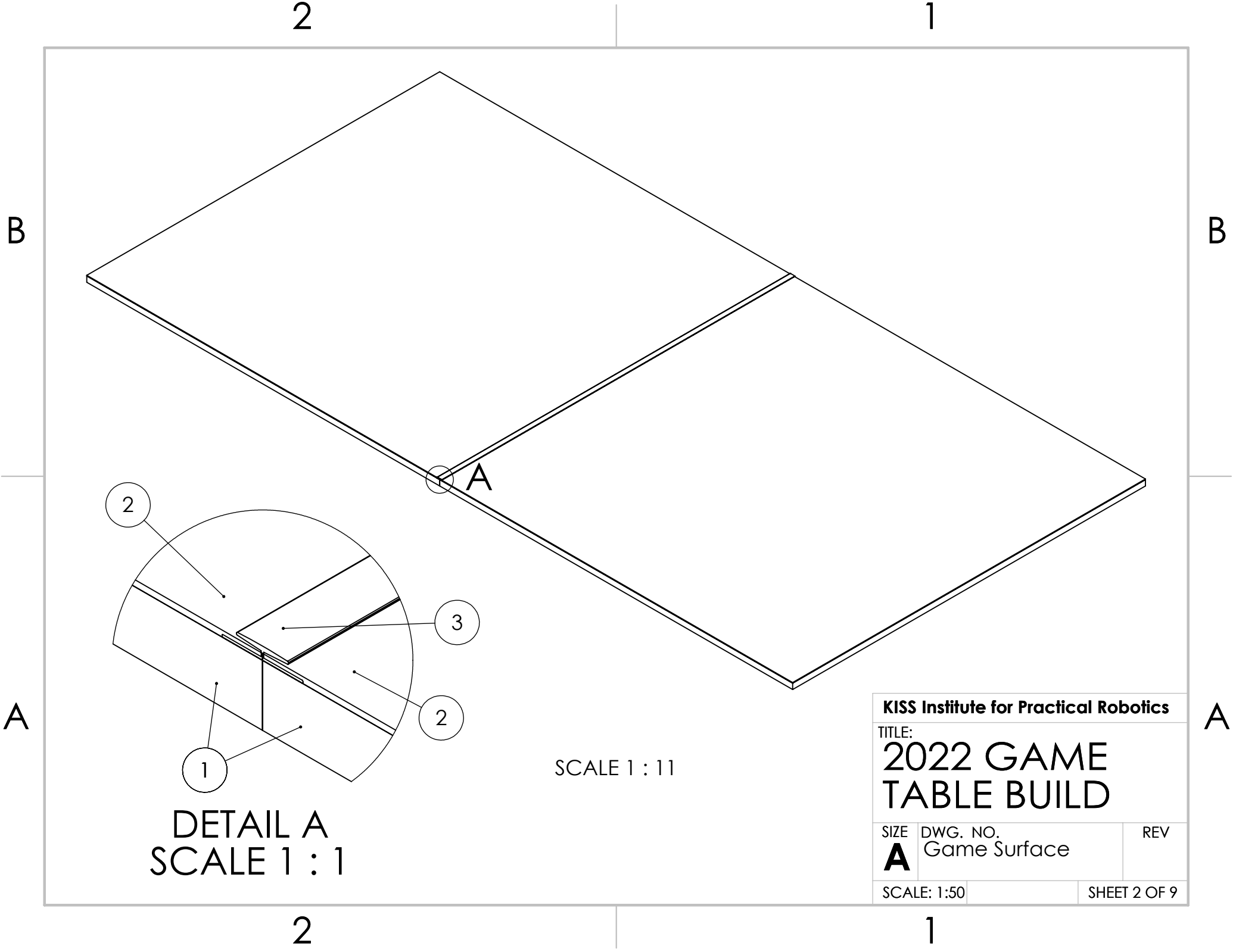
REV

SCALE: 1:50

SHEET 1 OF 9

2

1

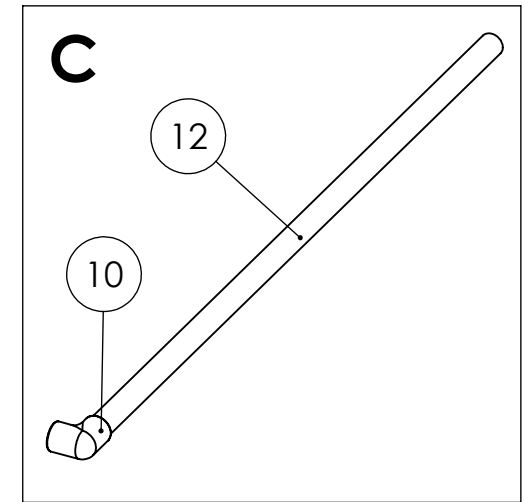
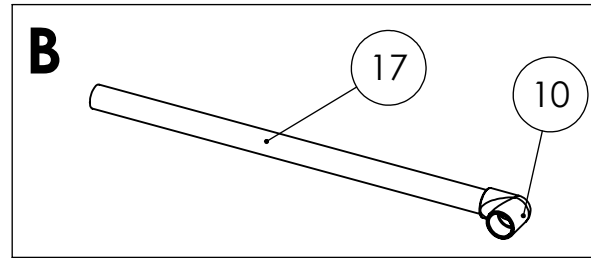
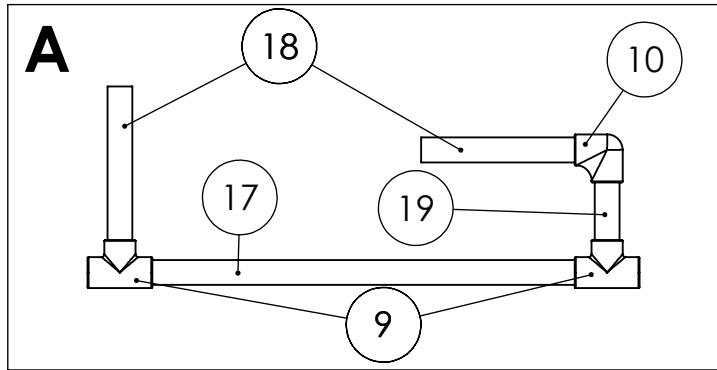


KISS Institute for Practical Robotics		
TITLE: 2022 GAME TABLE BUILD		
SIZE A	DWG. NO. Game Surface	REV
SCALE: 1:50	SHEET 2 OF 9	

2

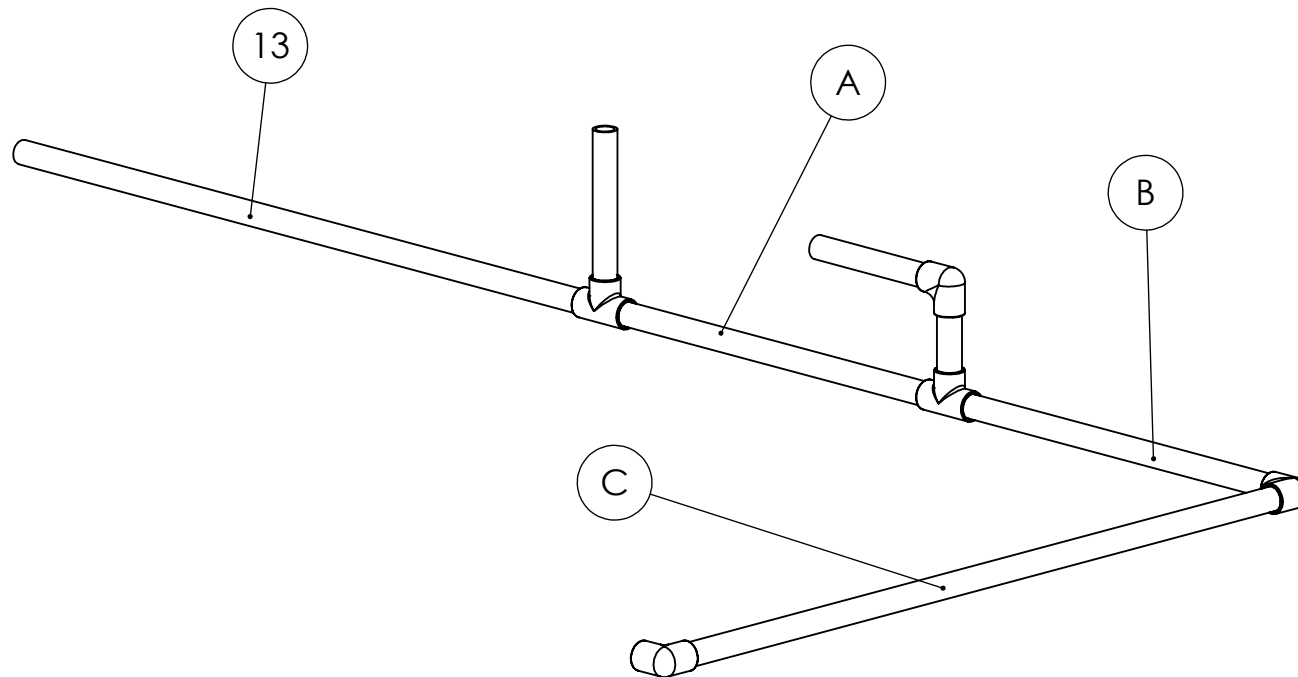
1

B



B

Assembly 1



A

KISS Institute for Practical Robotics

TITLE:

2022 GAME
TABLE BUILD

SIZE

A

DWG. NO.

Assembly 1

REV

SCALE: 1:10

SHEET 3 OF 9

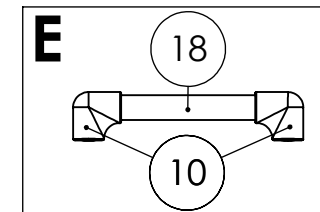
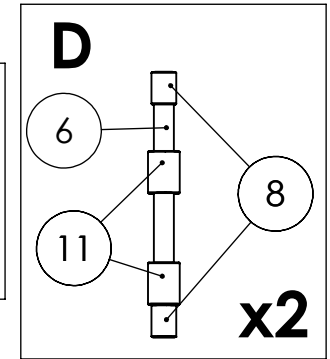
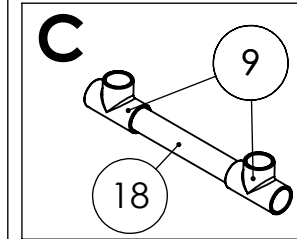
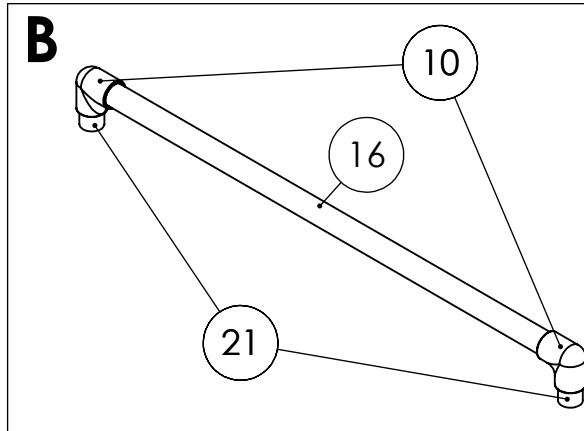
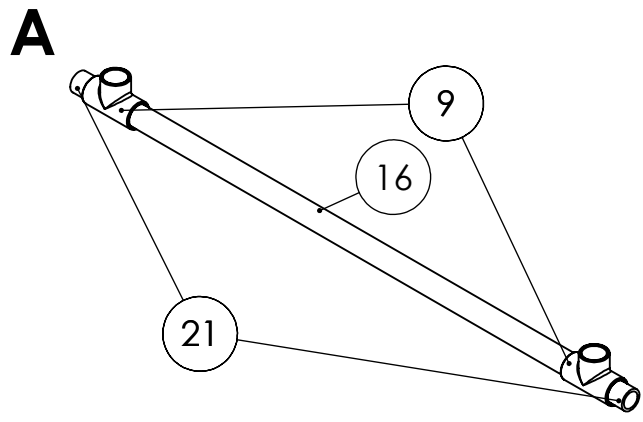
2

1

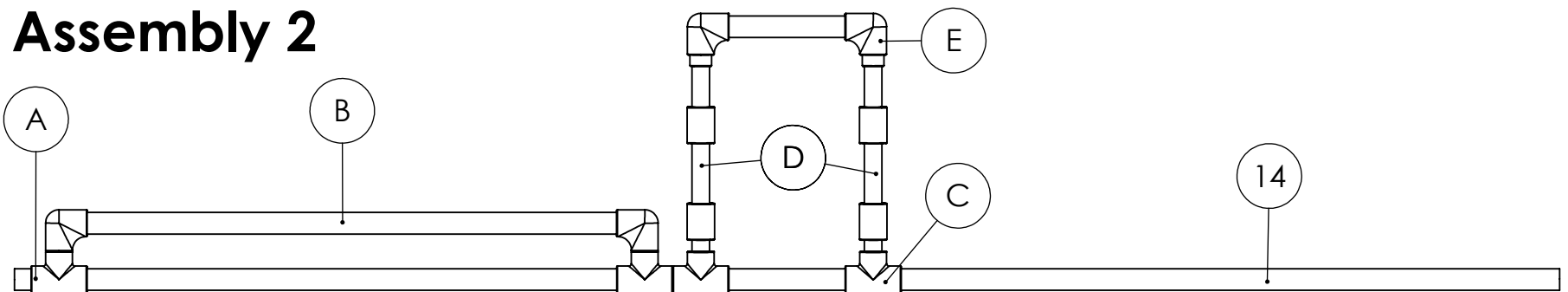
A

2

1



Assembly 2



KISS Institute for Practical Robotics

TITLE:

2022 GAME
TABLE BUILD

SIZE

A

DWG. NO.

Assembly 2

REV

SCALE: 1:10

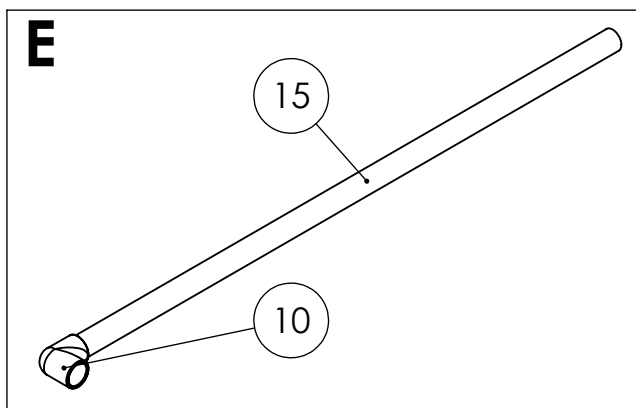
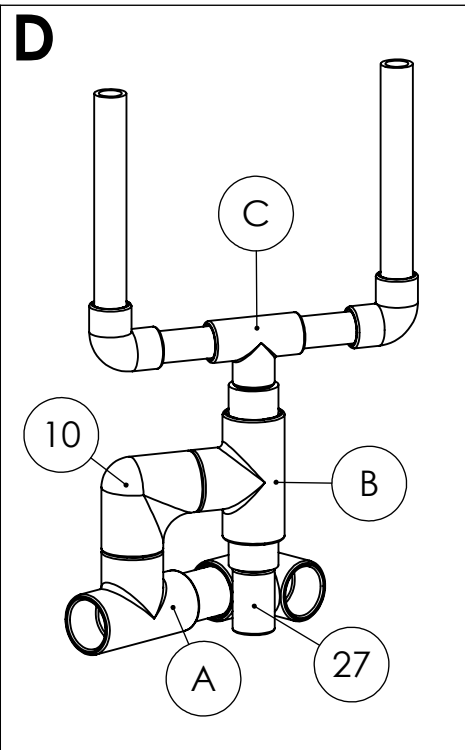
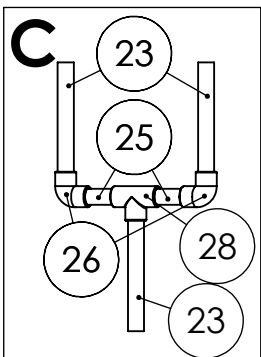
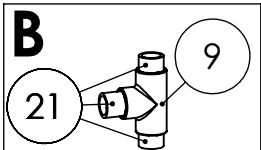
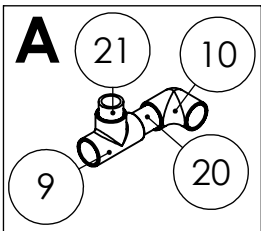
SHEET 4 OF 9

2

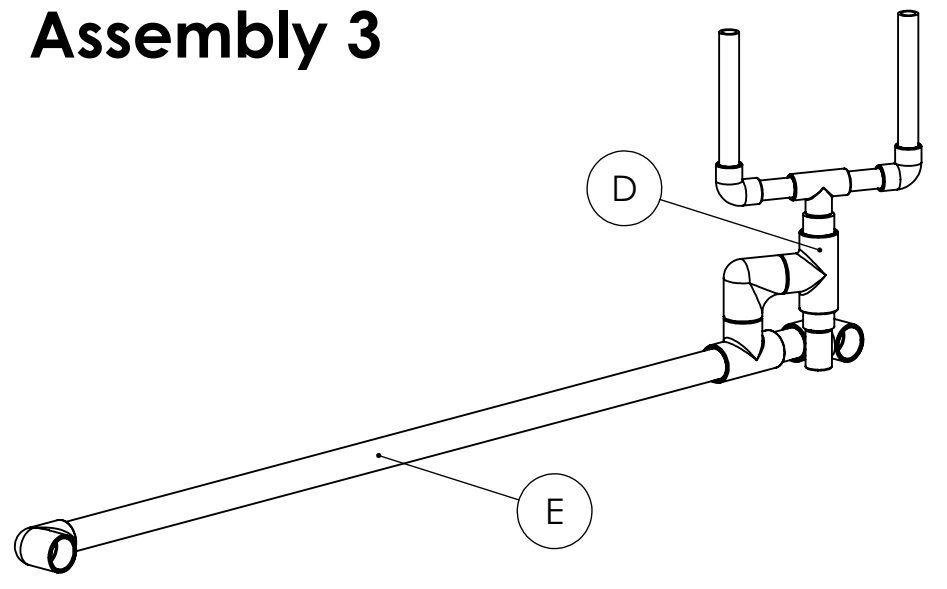
1

2

1



Assembly 3



KISS Institute for Practical Robotics

TITLE:

2022 GAME
TABLE BUILD

SIZE

A

DWG. NO.

Assembly 3

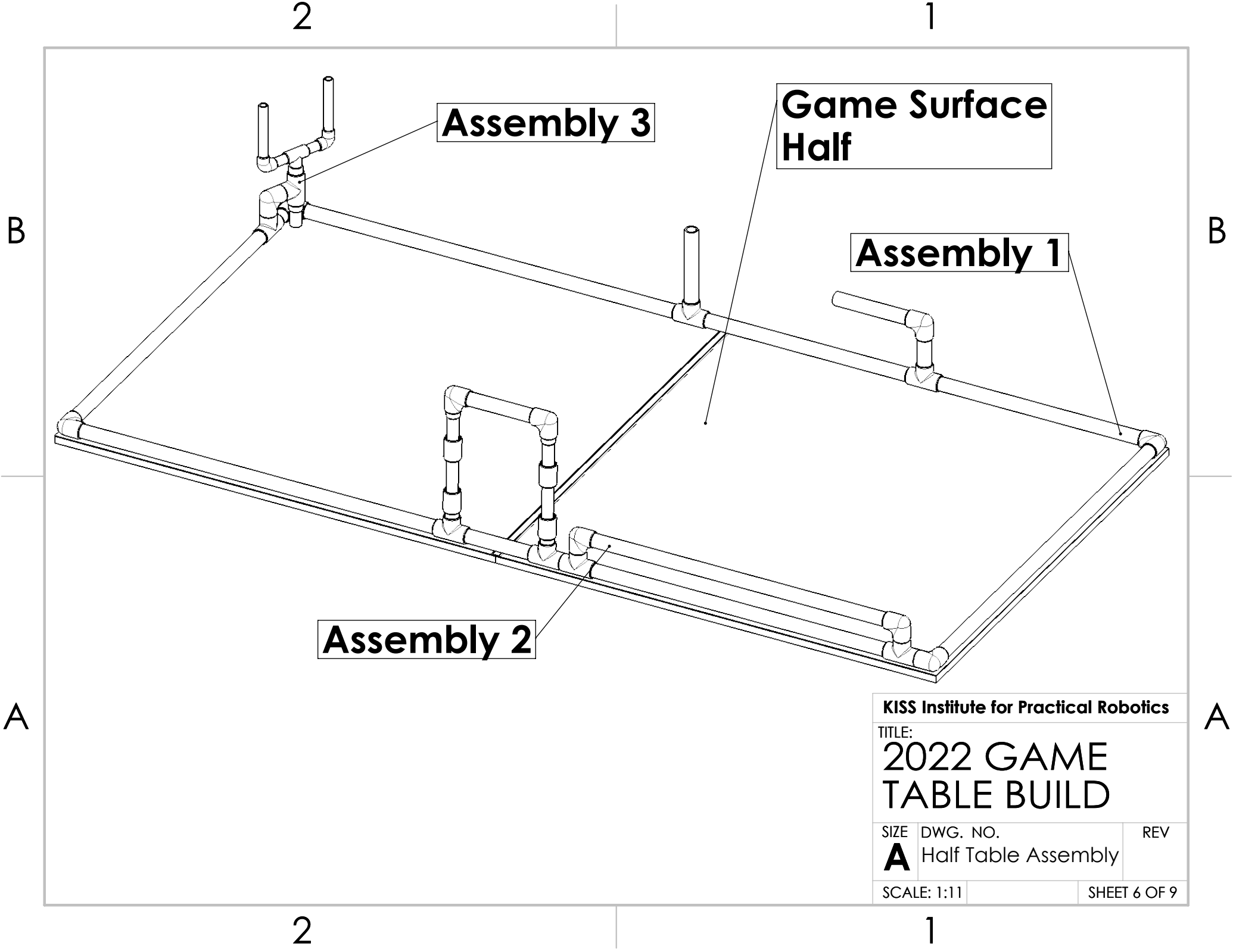
REV

SCALE: 1:10

SHEET 5 OF 9

2

1

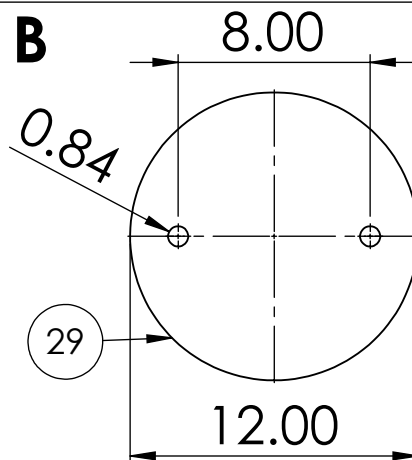
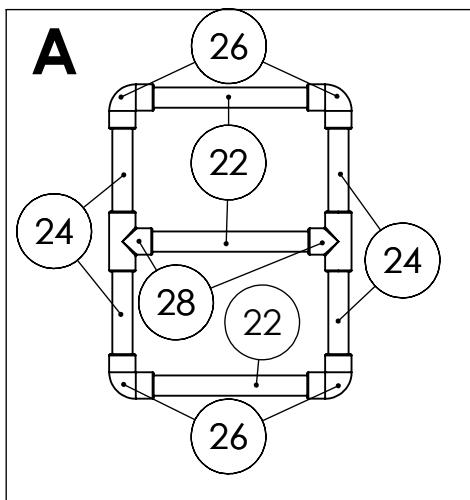


KISS Institute for Practical Robotics			
TITLE: 2022 GAME TABLE BUILD			
SIZE	DWG. NO.		REV
A	Half Table Assembly		
SCALE: 1:11		SHEET 6 OF 9	

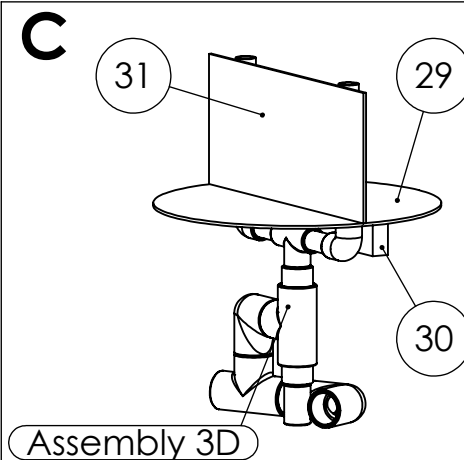
2

1

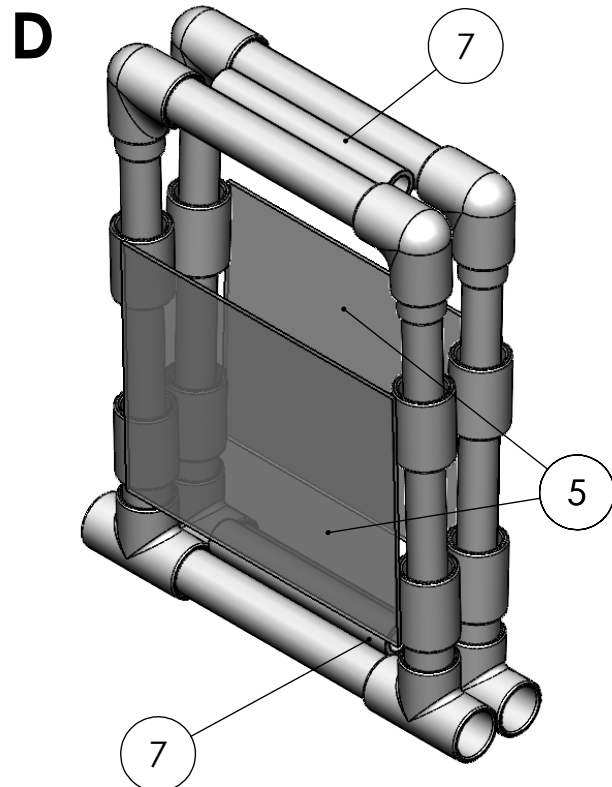
B



Note: Platform can be made from wood or other material such as cardboard if needed. Holes can generally be made with a 3/4" hole saw.

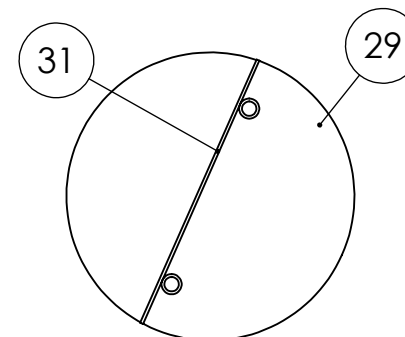


B



Note 1: Acrylic window (or substitute can be attached using duck tape, foam mounting strips (like commands strips), or other. We recommend white duck tape as that is what we will likely use for tournaments. The best method for attaching them is to lay one window down on top of PVC couplers and fasten with tape.

Note 2: The 6.5" PVC at the bottom of the gate in the center is not attached and is there to cause balls to fall when gate is opened. The upper one is to provide spacing so that moving couplers don't hit each other as much. The upper one will be secured by wrapping tape around it and it's adjacent pipes.



A

KISS Institute for Practical Robotics

TITLE:

2022 GAME
TABLE BUILD

SIZE

A

DWG. NO.

Additional Parts

REV

SCALE: 1:8

SHEET 7 OF 9

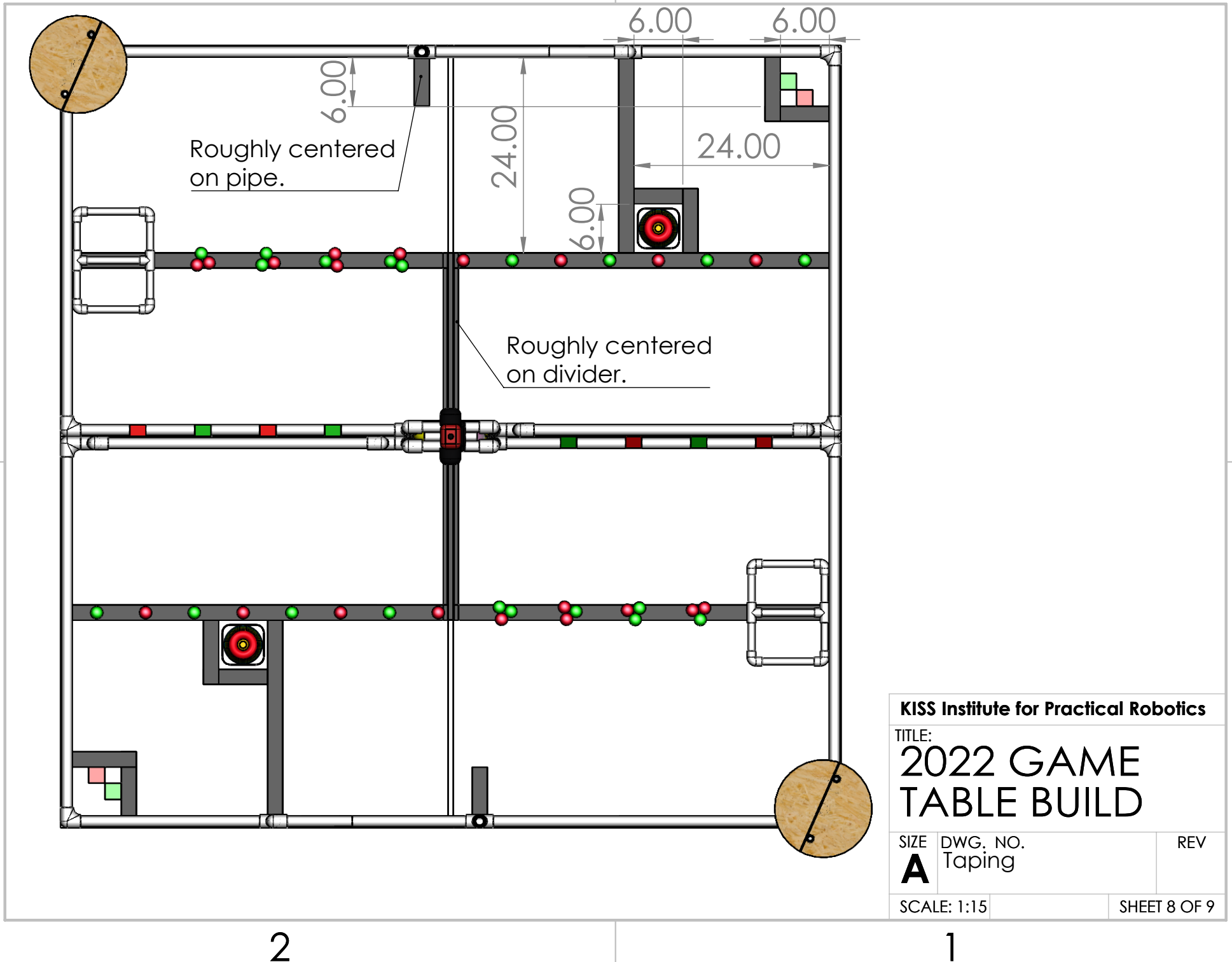
2

1

A

B

A



B

A

KISS Institute for Practical Robotics

TITLE:

2022 GAME
TABLE BUILD

SIZE

A

DWG. NO.
Taping

REV

SCALE: 1:15

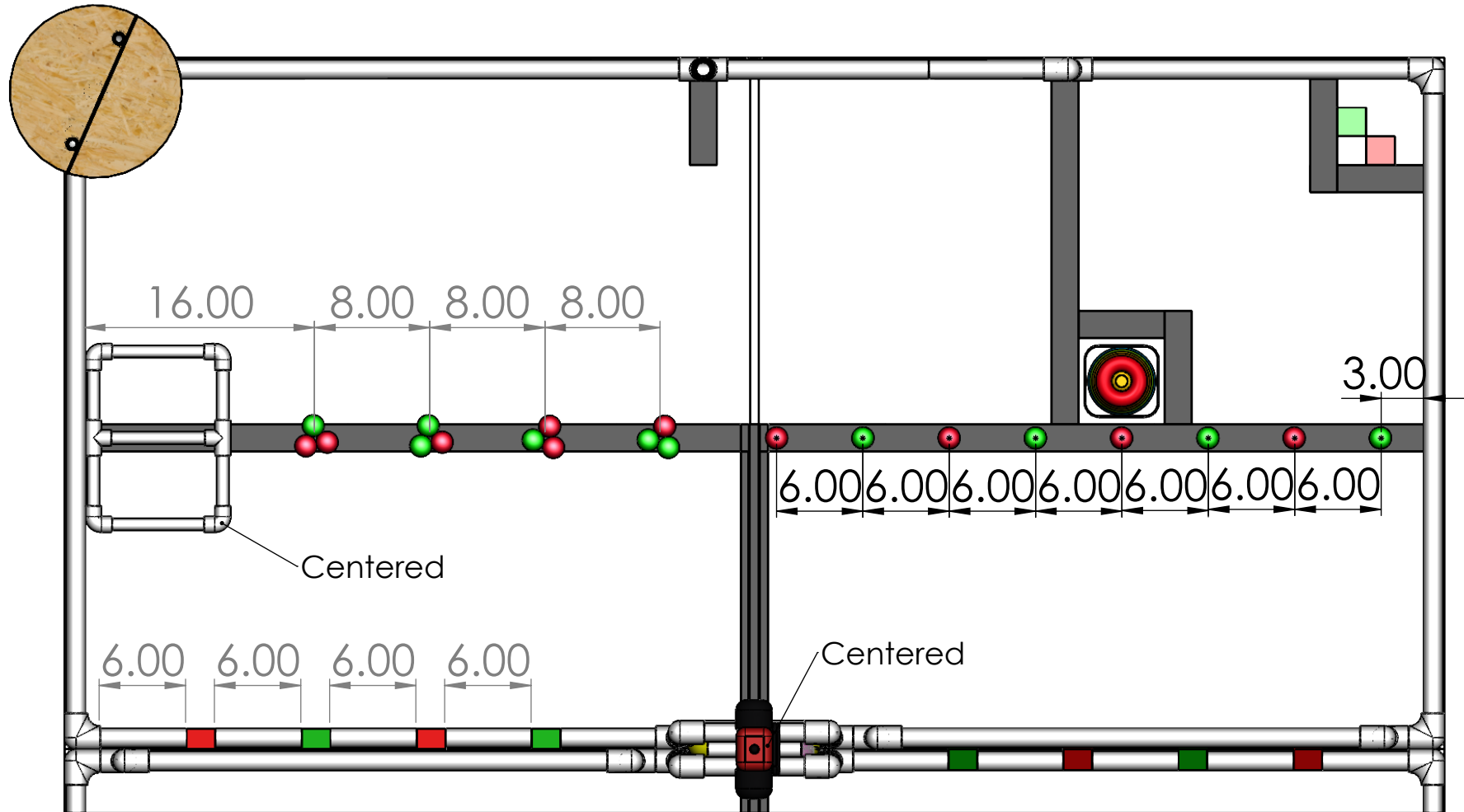
SHEET 8 OF 9

B

B

A

A



KISS Institute for Practical Robotics

TITLE:

2022 GAME
TABLE BUILD

SIZE

A

DWG. NO.
Game Pieces

REV

SCALE: 1:11

SHEET 9 OF 9

2

1